



# Native Agri Update

No. 273 , February 2008

www.indianag.on.ca

Published by  
INDIAN AGRICULTURAL PROGRAM OF ONTARIO

## From The Manager's Desk

By D.E. "Ted" Young, General Manager

iapo-ted@on.aibn.com

### GROWING FORWARD INITIATIVE

OMAFRA Minister Leona Dombrowsky recently hosted a provincial consultation for Ontario agricultural stakeholders on February 1, 2008 at 1 Stone Road in Guelph.

The meeting offered an opportunity for stakeholders to provide feedback on the non-Business Risk Management (non-BRM) suite of programs under **Growing Forward**, the new national policy framework that will replace the Agriculture Policy Framework (APF). IAPO was invited and provided opinions along with many other key industry stakeholders.

OMAFRA views this program initiative as an opportunity to build a thriving rural Ontario in the agriculture and food sectors.

The non-BRM programs of **Growing Forward** are deemed to be critical to the long term success of this initiative. Minister Dombrowsky emphasized it is vitally important to have stakeholder input as details are finalized. A second round of consultations was also held in the first week of February. There are proposals for two suites to deliver non-BRM programming: Best Practices & Innovation and Competitiveness.

The Agriculture Policy Framework (APF) was the first time federal, provincial, and territorial governments

tried to implement a joint, long term approach to a national agricultural policy. In reflection of that initiative the program got some things right and some things needed more work.

**Growing Forward** is being developed with three objectives in mind:

1. A Competitive and Innovative Sector
2. A Sector that contributes to Society's Priorities
3. A Sector that is proactive in Managing Risks

Next steps for the Non-BRM programs are:

- National consultation in Ottawa February 13, 2008
- Transition Agreement – A smooth transition from APF is essential
- Federal, Provincial, Territorial (FPT) Negotiations – Leading to a Framework Agreement, and detailed policy outcomes and direction
- Bilateral Negotiations- Finalizing program mix in each province
- Implementation Agreement- Finalize program and funding details
- Implementation

IAPO staff introduced the new **Growing Forward** program to Six Nations Farmers Partnership members at a recent farm meeting. IAPO Farm Management Advisors and staff are available to assist clients to participate in every eligible opportunity to improve their farming ventures. Any queries or concerns are welcome.

### Table of Contents

From The Manager's Desk	
Page .....	1
Agribusiness	
Page .....	2
Crop Information	
Page .....	3
Livestock Information	
Page .....	4
Market Information	
Page .....	5
Other News	
Page .....	6
Calendar of Events	
Page .....	6
The Market Place	
Page .....	6

### INDIAN AGRICULTURAL PROGRAM OF ONTARIO

#### Western Office

Box 83, Station Lambeth  
6453 Hamlyn Road  
London, ON N6P 1P9  
Phone: 519 652-2440  
Toll Free: 1-800-663-6912

#### Eastern Office

Box 100  
220 North Street  
Stirling, ON K0K 3E0  
Phone: 613 395-5505  
Toll Free: 1-800-363-0329

# Agribusiness

By Jim F. Hunter, Business Support Officer  
iapo-jim@on.aibn.com

## FIRST NATIONS AGRIGROUP (FNA) ANNUAL AND GENERAL MEETING

FNA will be holding their 8th General and Annual Meeting on Saturday morning, March 1st, at the Sour Springs Longhouse located on 3rd Line, just west of Chiefswood Road. This meeting will be held between 10:30 AM – 12:30 PM with a **FREE HOT LUNCHEON TO FOLLOW THE MEETING.**

A formal agenda will be going out to the membership within the next week.

## SIX NATIONS FARMERS PARTNERSHIP (SNFP) ANNUAL AND GENERAL MEETING

SNFP will be holding their 4th General and Annual Meeting on Saturday afternoon, March 1st, at the Sour Springs Longhouse located on 3rd Line, just west of Chiefswood Road. This meeting will be held between 1:30 - 3:30 PM following lunch.

A formal agenda will be going out to the membership within the next week.

Because there are many farmers who are members of both organizations and to save holding two separate meeting dates, it was decided to try holding the meetings on the same day. These are your organizations so your participation will be appreciated. As you will find in the agenda, there should be many interesting discussions about the future of both groups.

## FARM EQUIPMENT DEMAND UP



Equipment sales in Canada may follow the current U.S. trends. Local dealers are seeing increased interest by farmers to purchase equipment. As commodity prices rise, interest increases. U.S. farmers have been so aggressive with their purchases some companies report that the entire year's production for some models of tractors and equipment is sold out.



## FERTILIZER PRICES ESCALATE

I have just finished receiving the fertilizer quotes from five suppliers for the Six Nations Farmers Partnership (SNFP) growers to cover their needs for a total of nearly 9000 acres of winter wheat, soybeans, and corn.

If you haven't checked fertilizer prices, you're in for a shock. Prices have continued to increase since last fall and the SNFP quoting program and supplier recommendations show Urea up nearly 20%, Liquid N (28%) up 32%, MAP up over 59% and Potash up over 35% compared to the 2007 prices.

On nitrogen, growers often ask why it's so high when natural gas prices haven't risen nearly as much. The price of natural gas is a major input cost for manufacturing nitrogen fertilizer, but fertilizer is its own market. It goes up and down with supply and demand. It's just like grain in many respects. No one asks about our costs of production when they're bidding for our grain!

So use your fertilizer wisely and be sure your planter and broadcast equipment are working properly.

Availability may also be a problem, so if you are not a member of the SNFP buying group, you should now be booking some of your spring needs.

## HIGH PRICES BREED OPPORTUNITY

Durum wheat may become a profitable alternative for some Ontario farmers. C&M Seeds in Palmerston has developed new genetics in a variety called Hallmark. It will be interesting to watch the development of this crop in the next few years.



## Chipper Chirp

*You may be only one person in the world,  
but you may also be the world to  
one person.*

*Source Unknown*

# Crop Information

By Peter Jay Lanthier, Farm Management Advisor

iapo-peter@on.aibn.com

## CROP RESEARCH TRENDS

### ASIAN SOYBEAN RUST



This is a good time of the year to review some of the trends and changes in crop research and development. The question was asked at a recent growers meeting about the threat of **Asian soybean rust**. OMAFRA field crop specialist, Albert Tenuta, stated at the recent Farm Smart Conference, that soybean rust has yet to become an economic issue in North America. This is mainly because the rust cannot over winter in our northern climate. After several years of monitoring and tracking the disease, only one case has been reported in Ontario. Soybean rust can be managed through proper crop rotation, timely crop scouting, and the use of fungicides. The disease first appears as small lesions on the lower leaves of an infected plant. The lesions increase in size and change from grey to tan or reddish-brown on the undersides of leaves.

### CORN ROOTWORM RESISTANCE

A number of presentations given at the annual Southwest Agricultural Conference in Ridgetown were centered on the topic of **corn rootworm resistance**. As producers we have come to depend on Bt corn hybrids that provide resistance to insects such as corn rootworm and corn borer. To maintain or prolong resistance, it is vitally important as producers to plant refuge. Without planting an area of your corn crop to a non Bt hybrid, resistance will become more of a question of when not if.



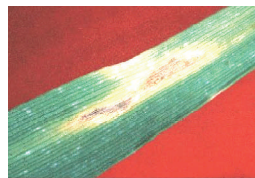
### HERBICIDE RESISTANCE



The same approach should be used to prevent glyphosate resistance. Rotating from RR to Liberty or even back to conventional weed control for a year will go a long way to preventing weeds developing resistance on your farm. Another good method to promote less resistance and to reduce overall weed pressure is to use a tankmix of an atrazine based residual herbicide with your roundup. For instance gly-

phosate with a reduced rate of Primextra II Magnum gives very good weed control with a good level of residual control at a similar cost of two glyphosate sprays.

### LEAF DISEASE ON WINTER WHEAT



Winter wheat that had an early planting date in the fall of 2007 had substantial growth. In some instances that lush crop was showing signs of disease on the foliage as winter set in. Many crop scouts were observing significant levels of leaf disease in some areas. The ongoing debate now is whether or not to make an early application of a preventative fungicide to minimize the loss from **leaf diseases on winter wheat**. Crop specialists are split in their recommendations to spray early as a preventative measure or to wait and see if the need arises. They all agree however, that scouting is the key; you need to get out into your fields to make a proper assessment. At the Farm Smart Conference, OMAFRA cereal specialist Peter Johnson suggested that Stratego would be the prudent choice for an early preventative measure. Research has been done recently to show the benefits of protective fungicides on winter wheat. This combined with a later application of Folicure or Proline can result in several bushels or more in extra yield. With the current prices offered for new crop wheat, protecting your yields makes cents.

### SEED TREATMENTS

The first step for every crop should be a seed treatment, particularly this year when potential profit margins are relatively high. It's a pre-emptive strike against early seed- and soil-borne disease that can substantially reduce yields. The thing to remember about seed- and soil-borne diseases is that you can count on them being there. Even if your seed is clean as a whistle, all soils contain background levels of the common soil-borne pathogens – *Fusarium*, *Pythium* and *Rhizoctonia* – that can cause things like damping off, root rots and seedling blight. If those diseases take hold, they can lead to poor germination, stand establishment and, ultimately, reduced yields. Seed treatments allow your crop to get firmly established and for healthy plant stands to develop. Seed treatments for soybeans, such as ApronMaxx and CruiserMaxx, give your beans their best potential for spring emergence and vigor. ApronMaxx provides fungicidal protection from soil-borne diseases that cause seed rot, dampening off and blight. CruiserMaxx combines Apron with a seed applied insecticide that controls important early season pests of soybeans such as seed corn maggot, bean leaf beetle and early infestations of soybean aphids.

# Livestock Information

By Mark Leahy, Farm Management Advisor

mark@indianag.on.ca



## FROST-SEED LEGUMES IN MARCH

Working up old pastures can be expensive and even impossible with rough pasture. Frost seeding is an option to introduce legumes to the stand. Be ready to frost-seed legumes when soil and temperature conditions are right. While broadcasting seed on frozen ground is generally less successful than seeding in rows with a no-till drill, it can work satisfactorily if done in late winter when the soil is freezing and thawing daily and is moist. The freezing and thawing action, or honeycombing of the soil surface with ice crystals, along with rain, helps cover seed with soil and create good seed-to-soil contact. The window of time when conditions are optimal is often very narrow. Early morning frost seeding, before the soil surface begins to thaw, is best. If the soil surface is greasy, wait until the next morning when the soil is frozen again.

Frost seeding works best when pasture and hay stands are thin and where the field was heavily grazed or harvested the previous fall. Red, white clover and trefoil establish better with frost seeding than alfalfa. Grasses are difficult to establish with frost seeding because it is difficult to have good seed-to-soil contact. Legume seeds also germinate at a

lower temperature compared to grass seeds. For trefoil broadcast four to five lbs per acre, clover seed at two lbs.

## COLOSTRUM – LIQUID GOLD!

Colostrum, a cow's first milk is called liquid gold for good reason. It has twice the energy, 100 times the vitamin A, six times the protein and three times the mineral content of regular milk.

It provides a newborn calf with protection from disease. Calves are born with little natural protection. Through this first milk a calf receives antibodies from its mother. Antibodies are disease fighters and provide the calf with immunity. This is the most important step in getting a calf off to a quick start.

The next thing to remember is a calf can absorb this liquid gold for only a short period of time. By the end of the first day a calf's digestive system can't absorb the special antibodies in colostrum.

To be most effective a calf should get about two litres in two to four hours after birth. At this time the antibodies are taken directly into the calf's bloodstream. A few hours later it is not able to take advantage of this special immunity. Studies have shown that calves getting colostrum later than two to four hours have a greater chance of developing scours, pneumonia, other calf diseases and eventually die.



Colostrum is great stuff. The sooner a calf nurses the better.

## HELPING THE NEW-BORN CALF BREATHE

*Adapted from an article by Glen Selk*

The newborn calf must begin to breathe as soon as possible. Here are some ideas to try when a calf needs help. First, manually clear the mouth and nasal passages of fluids and mucus. Briskly tickle the inside of the nostrils of the calf with a straw. This will usually cause the calf to have a reflex action such as a "snort" or cough. The reflex cough or "snort" expands the lungs and allows air to enter. Expect the calf to pant rapidly for a few minutes after breathing is initiated.

Many calvers say they hang the calf over a gate. This is not the best method to use. The weight of the calf on the fence restricts the movement of the diaphragm muscles. The fence impairs the diaphragm's ability to contract and move. This diaphragm activity is necessary to expand the lungs to draw in air and needed oxygen.



## PROTECT AGAINST WHITE MUSCLE DISEASE

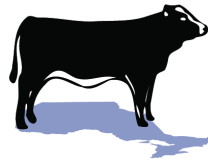
White muscle is a calf disease that is often fatal. It most often affects large fast growing calves. As the name suggests muscle is affected with the affected area turning white. Often the disease hits a heart muscle causing death.

An injection of Vitamin E and Selenium at birth usually controls the disease. Different products are available however only 1 cc per injection is required.

Check with your veterinarian.

# Market Information

## BEEF MARKET



**Ontario  
Cattlemen's  
Association**  
*Committed to Cattlemen*

Prices are courtesy of the Ontario Cattlemen's Association Weekly Market Information Report for the week ending February 7/08.

Rail prices are down \$3/cwt, fed cattle prices are steady compared to a month ago.

Steer and heifer calf prices have strengthened \$3 to \$5.

Cull cow and bull prices are up \$2 to \$3.

Category	Price Range	Ave. Price	Top Price
Rail Steers	137-140		
Fed Steers	76 - 84	80	93
Fed Heifers	76- 84	81	89
Cows	25 - 44	36	69
Bulls	40- 54	49	84
Stocker Steers			
600 - 699	88 - 101	94	111
500 - 599	82 - 107	97	121
Stocker Heifers			
600 - 699	68 - 88	80	102
500 - 599	70 - 93	84	108

All prices are on a hundred pound basis (cwt)

## CROP MARKET

### BASIS : A BASIC DEFINITION

The relationship between the cash and futures price is known as the basis. In marketing, basis generally refers to the difference between a cash price at a particular location and a specific futures contract price. The futures price is adjusted for such variables as foreign exchange, freight, handling, storage quality and localized demand. Basis can be either added to (positive basis), or deducted from the futures price (negative basis). Ontario producers have been somewhat protected from a negative basis in the past because of our \$0.66 to \$0.88 cent dollar over the last thirty years. Currently our dollar hovers very close to par or even above resulting in a negative basis. Now, more than ever, it's important to understand basis so producers can make the best of opportunities to net a higher price for their grain.

Ultimately basis is a real reflection of local supply and demand. This is why

there is a range of basis' around the county, province, country, even world-wide. Basis can be described as a large valve in the grain pipeline from producer to processor. The valve is more closed when demand is low resulting in a less favorable, weakening basis. And consequently when demand is high the valve opens providing a more favorable, strengthening basis. This also explains why there is different basis values for

each crop; supply and, or demand will vary for each crop throughout the year (even day to day). A producer's decision as to when and how to market crops or livestock can have as great an impact on net profit as any production decision. Growers should compare the traditional marketing method of making a cash sale at harvest, or when livestock are ready for market, to forward contracting.

CORN-Tuesday, Feb. 11, 2008: (at elevators)					
NORFOLK					
OLD CROP Mar '08	Futures 5.03	Basis - 0.80	Price 4.23		
NEW CROP DEC '08	Futures 5.25	Basis - 0.80	Price 4.45		

SOYBEANS-Tuesday, Feb. 11, 2008: (at elevators)					
NORFOLK					
OLD CROP MAR '08	Futures 13.26	Basis - 1.13	Price 12.13		
NEW CROP NOV '08	Futures 12.82	Basis - 1.31	Price 11.51		

SOFT RED WHEAT-Tuesday, Feb. 11, 2007: (at elevators)					
NORWICH					
OLD CROP MAR '08	Futures 10.48	Basis - 1.00	Price 9.48		
NEW CROP JULY '08	Futures 9.79	Basis - 2.35	Price 7.44		

# Other News

## ONTARIO MILLERS IMPACTED BY PRICES

A recent London Free Press story reports that the cost of wheat is adversely affecting Ontario Mills. The cost of wheat has doubled in five years and now sits at a record high. Arva Flour Mills near London, is only milling half the amount it did five years ago. Soaring costs are placing the price of flour out of reach for some industry users. The long term affect of wheat's dramatic rise will depend on the duration of the current price rally.



chanical handling damage from harvest to processing. Reports are circulating that some growers are having their soybean seed orders cut or are being sold alternate varieties.

## LOONIE TO RISE IN 2008

Analysts speculate the Loonie's recent move lower from the historical highs against the U.S. dollar is only temporary. Scotiabank predicts that the Canadian dollar is headed for another round of gains. Their predictions call for the Loonie to end 2008 at about \$1.04 U.S.

## HIGH FEED COSTS

The National Cattlemen's Beef Association will continue to challenge tax credits for the ethanol industry.

Cattlemen are facing corn prices of \$4.70 per bushel or higher as opposed to \$3.00 per bushel one year ago. The group targets the incentives propelling the huge corn gobbling ethanol industry as the main reason for high prices.

All livestock producers relying on corn are in a financial pinch. If the industry is forced to downsize to extremes, then consumers will certainly pay in the long run. Consumers may not find their favourite cuts of meat readily available in the marketplace.

## QUALITY AFFECTS U.S. SOYBEAN SEED

Seed companies in the Southern U.S. are scrambling to fill soybean seed orders. Hot dry conditions during seed fill in 2007 resulted in low moisture beans that were prone to me-

# Calendar of Events

- Feb 21 Farmers' Meeting, Wiky Band Council Chambers, 6:30 pm
- March 1 FNA/SNFP Annual Mtg., Sour Springs Longhouse, 10am-3pm (Hot lunch provided)
- March 15 Grower Pesticide Safety Course Certification, Bear's Inn Boardroom, 9am—4 pm (Lunch Provided)
- March 19 IAPO/SNFP Production Meeting, Location to be confirmed, 7-9:30 pm (Refreshments provided)

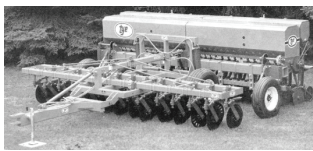
THIS SPACE RESERVED FOR AGRICULTURAL EVENTS IN YOUR AREA

Please contact us if you have an item for the Calendar of Events

## The Market Place

For Sale:

- 1999 New Holland TL90 Tractor, Cab, Air, FWA, 76 H.P., low hours, contact IAPO-Lambeth @ 1-800-663-6912
- White Tractor, 4wd, 180 hp, Cat engine, good running order, available at Six Nations, contact Eldred Martin, @ 519 445-4595 or 445-1212



- Tye No-Till Grain Drill, model # AGCO114-7368, 15 foot no-till grain drill with coulter cart, good working condition contact IAPO-Lambeth @ 1-800-663-6912